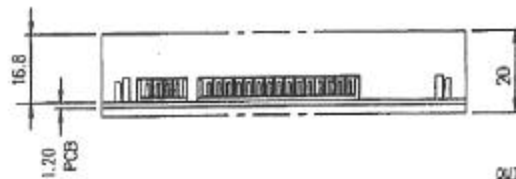
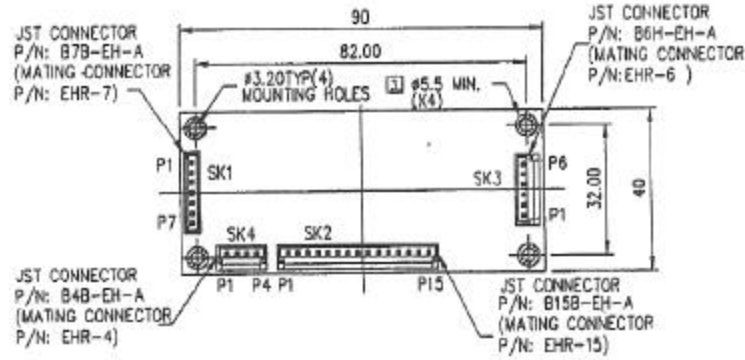


Jameco Part number 109276
109276



AA9090
(Preliminary Specification Rev.02)

MECHANICAL OUTLINE



INPUT CONNECTOR (SK1)	
PIN NO.	CONNECTION
1	+VIN
2	+VIN
3	-VIN
4	-VIN
5	-VB
6	-VB
7	+VB

CCFT OUTPUT CONNECTOR (SK3)	
PIN NO.	CONNECTION
1	CON1
2	CON1
3	NC
4	VO1
5	NC
6	VO2

BATT CONNECTOR (SK4)	
PIN NO.	CONNECTION
1	+BATT
2	+BATT
3	-BATT
4	-BATT

OUTPUT CONNECTOR (SK2)	
PIN NO.	CONNECTION
1	5.1V
2	5.1V
3	-26V
4	+12.6V
5	0V
6	0V
7	BATT-IN-USE
8	DISABLE
9	CCFT ADJ
10	CCFT DISABLE
11	BATT L1
12	BATT L2
13	SW1
14	SW2
15	PSW

NOTES:
1. FOR SK3 CONNECTOR, PIN 3 & 5 TO BE VOIDED.
2. ALL DIM. ARE IN MM.
3. COMPONENTS & COPPER TRACKS FREE AREA ON BOTH COMPONENT SIDE & SOLDER SIDE.

ASTEC

The Real Power

ASTEC EUROPE LIMITED
High Street, Wollaston, Stourbridge,
West Midlands, DY8 4PG England.
Tel: (0384) 396171 Tlx: 337482
Fax: (0384) 390409

ASTEC INTERNATIONAL LTD.
6/F., Kaiser Estate, Phase. 2,
51, Man Yue Street, Hunghom,
Kowloon, Hong Kong,
Tel: 765-3333 Tlx: 44698
Fax: 784-3249/764-3345

ASTEC AMERICA INC.
401 Jones Road,
Oceanside, CA 92054, USA
Tel: (619) 767-1880 Tlx: 350227
Fax: (619) 439-4243